

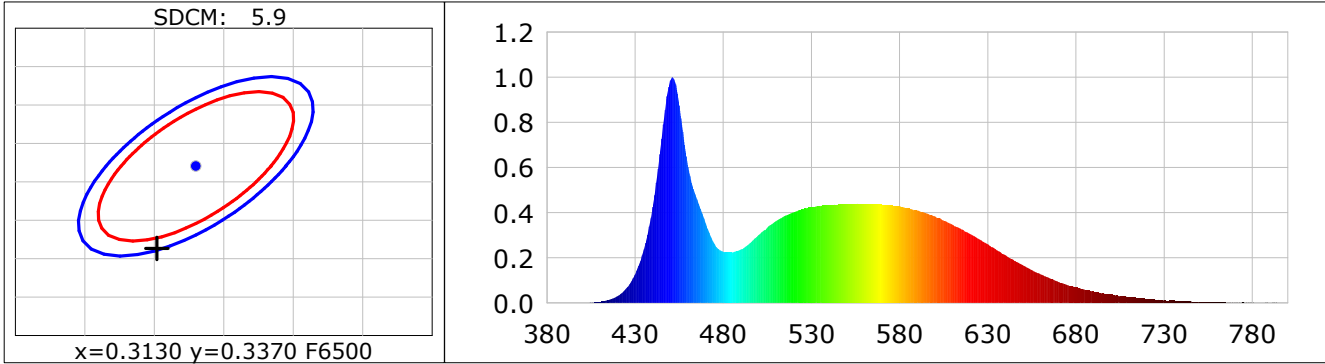
**Lightsource Test Report**

**Product Infomation**

|                              |                         |
|------------------------------|-------------------------|
| Product Category: LED STRIP  | Product Type: LED STRIP |
| Product Spec: BELL 5         | Product Number: 395     |
| Manufacturer: TECSOLEED S.L. | Buyer: TECSOLEED S.L.   |

**CIE Colorimetric Parameters**

Chromaticity coordinates:  $x=0.3102$   $y=0.3263$   $u(u')=0.1971$   $v=0.3110$   $v'=0.4665$   
 CCT:  $T_c=6666K$  ( $duv=0.00308$ ) Color Ratio:  $R=0.133$   $G=0.811$   $B=0.057$   
 Peak Wavelength: 451.1nm Half Bandwidth: 21.9nm  
 Dominant Wavelength: 487.7nm Color Purity: 0.083  
 CRI:  $R_a=83.0$ ,  $avgR(1\sim14)=75.5$ ,  $avgR(1\sim15)=75.6$  TM30:  $R_f=82$ ,  $R_g=95$   
 GAI:  $GAI\_BB\_8=90.6$ ,  $GAI\_BB\_15=95.8$ ,  $GAI\_EES=89.0$   
 R1 =81 R2 =87 R3 =90 R4 =83 R5 =82 R6 =82 R7 =88 R8 =70  
 R9 =8 R10=69 R11=82 R12=57 R13=83 R14=95 R15=77  
 Color Quality Scale:  $Q_a=80.7$ ,  $Q_f=80.5$ ,  $Q_p=81.5$ ,  $Q_g=91.6$   
 Q1 =84 Q2 =98 Q3 =76 Q4 =70 Q5 =78 Q6 =81 Q7 =86 Q8 =90  
 Q9 =96 Q10=85 Q11=81 Q12=81 Q13=81 Q14=71 Q15=76



**Photometric Parameters**

Luminous Flux: 2362.6 lm Efficiency: 114.43 lm/W Radiant Power: 7.611 W  
 Total mains efficacy: 105.96 lm/W Energy Efficiency Class: F (EU 2019/2015)

**Electric Parameters**

Voltage: 24.000V Current: 0.8603A Power: 20.65W  
 Power Factor: 1.0000 Frequency: 0.00Hz

**Test Infomation**

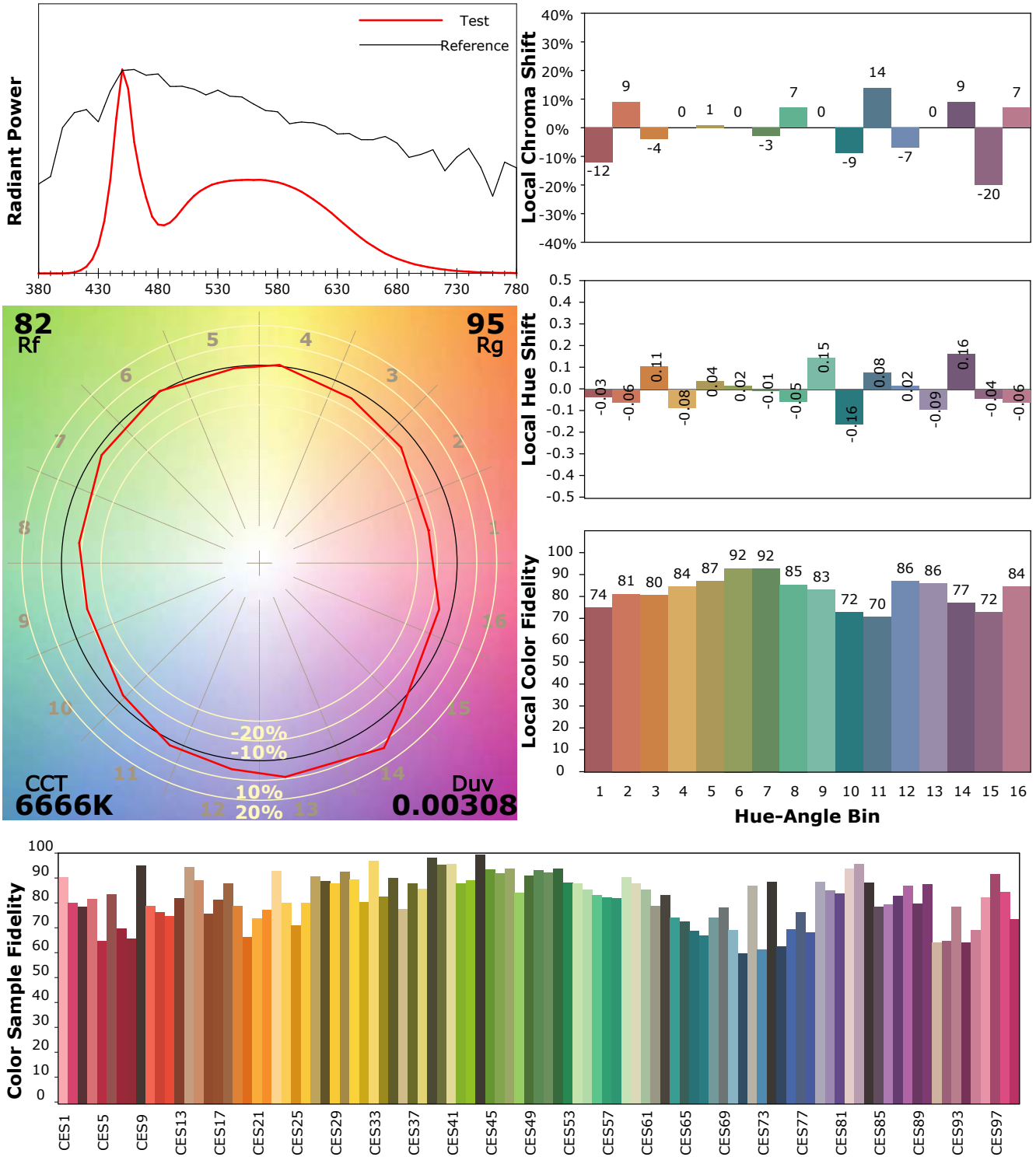
Scan Range: 380~800:1nm Photometric Method: sphere-spectroradiometer  
 Stabilization Time: 0 Sec ALC.: 1.0000 Photometric Condition: Sphere diameter: 1.50m, 4PI  
 Max of Signal: 46556 (1972) CCD Integration Time: 136.66 ms

## IES TM-30-18 Color Rendition Report

### Product Information

Product Category: LED STRIP  
 Product Spec: BELL 5  
 Manufacturer: TECSOLED S.L.

Product Type: LED STRIP  
 Product Number: 395  
 Buyer: TECSOLED S.L.



Condition: Tx:17.6°C, Ti:16.8°C, R.H.:60%  
 Test Lab: TECSOLED S.L.  
 Operator: JORDAN GIL DIAZ

Test Device: Inventfine CMS-2S (Plus)  
 Test Time: 2021-11-08 15:38:42  
 Inspector: